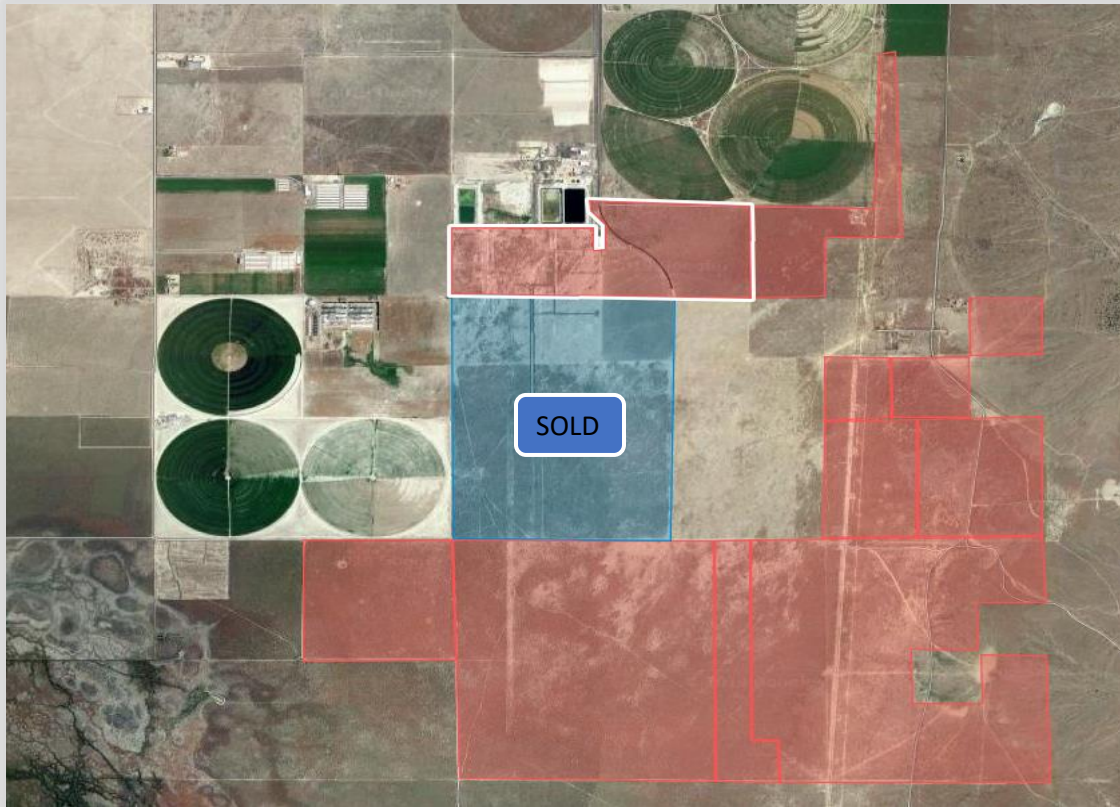


# INDUSTRIAL LAND – EAGLE MOUNTAIN, UTAH



## CITY FACTS

- Development incentives may be available from the city
- Fast growth track – 100's of new homes built annually
- City Population 33,000+ and growing at a rate of 10%
- Over 4,000 acres available



## CONTACT INFORMATION

Phone: 801-403-9179  
1754 Cedar Trails Way, Eagle Mountain Utah 84005  
founders@eaglemountainutah.com  
www.Eaglemountainutah.com

## City Center in Eagle Mountain

Prime commercial land on major thoroughfares is still available in one of Utah's fastest growing areas!

- Prime commercial land on arterial roads in one of Utah's fastest growing areas
- All utility services available in adjacent arterial roads
- All parcels can be subdivided to suit your specific needs
- Property is currently vacant
- Gentle, nearly flat topography
- Large potential customer base
- No existing business competition
- Huge appreciation potential

*“Sustainable, environmentally sound development is an elemental part of the plan for the future”*



Eagle Mountain sits at the western base of the Lake Mountain Range in Utah's ruggedly beautiful Cedar Valley. The town has a total area of over 43 square miles (Utah's third largest city by area) and is located 30 miles south of Salt Lake City.